

## The Cottages

### Puddleduck Cottage

Sleeps 4 (1 double, 1 bunks) + cot



A charming detached single-storey cottage built from local stone with traditional slate roof, with views over the countryside. French windows lead to a private patio with BBQ. It has two bedrooms (one double, one 2'6" bunks for child use) both with panel heaters.



The bathroom has a bath with shower over and a WC. The open plan sitting room/dining area has a wood burner fire (logs inc), colour TV and video.



The well-equipped kitchen has an electric cooker and microwave, fridge and dishwasher. Hot water is provided by an electric immersion heater. Access to this cottage would be suitable for partially disabled guests.



Puddleduck Cottage is named after the view it has over the duck pond across the fields to the moors beyond.



## The Granary



A two-storey stone granary with local slate roof tastefully converted to two cosy holiday cottages with beamed ceilings and oil fired central heating. Views over the trees and fields enjoyed through the large picture windows in the comfortably furnished first-floor sitting rooms make these very popular with visitors. Sitting rooms have colour TV and video. Outside there is a large shared patio with picnic tables and a BBQ. Both cottages have fully equipped kitchen/dining rooms and a ground floor twin bedroom with ensuite shower room/toilet.

On the upper floor both have a master double bedroom with 5ft four-poster bed.

### Poppy Cottage

Sleeps 6 (1 double, 1 twin/double, 1 bunks) + cot



The light and spacious Poppy sitting room has beamed ceilings and picture window.



Ground floor dining room with fully equipped kitchen



The Master bedroom with four-poster bed shares a shower room/toilet with a third bedroom fitted with double 2'6" bunks for child use.

### Primrose Cottage

Sleeps 4 /6 (1 dble, 1 twin/dble) +2 (sofabed)+cot



You enter Primrose Cottage into the large open plan family dining room and kitchen which can seat 12 adults comfortably.

The cosy sitting room with sofa bed, TV, video ; picture window.



This Master bedroom with full sized four-poster bed has a second shower room/toilet ensuite.



### Activities for children

Within 30 mins there is a variety of fun activity parks for the children. Brocklands Park, Trethorne Leisure Farm, Killarney Springs and the Hidden Valley to name but a few and all at reasonable cost.



Should the weather not be good enough for these or the beach, we have a range of indoor activities in the various barns and stables.

Facilities include: table tennis, snooker, a Scalextric layout and a model railway all designed to interest children young and old.

Babysitting can be arranged during the evenings.



**Higher Sellick Farm** is a former dairy farm situated peacefully in the middle of the Devon countryside, with easy access to the wide sandy beaches, surfing and rock pools at Widemouth Bay and Bude as well as to the dramatic scenery of Dartmoor, Bodmin Moor and Exmoor.

Nearby is the traditional market town of Holsworthy with it's weekly markets, shops, pubs etc, where the service will take you back 20 years.



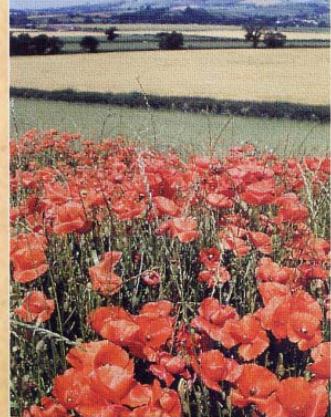
Enjoy walking over the surrounding 11 acres of fields watched only by the cows and sheep which are usually in residence.

The local wildlife include rabbits, hares, barn owls hunting at dusk over our fields, skylarks in season and a badger sett only two hundred yards from the farmhouse.



## Higher Sellick Farm Cottages

in the heart of Devon



Higher Sellick Farm  
Clawton  
Holsworthy  
Devon  
EX22 6PS  
Tel: 01409 271456  
Fax: 01409 271144  
[www.devonholidays.org](http://www.devonholidays.org)

### Things to do in the area

As well as the superb coastal walks and sandy beaches of North Devon and Cornwall there is a wealth of places to visit within easy reach.



Visit the beautiful Rosemoor RHS Gardens, Pencarrow,

the picturesque fishing villages of Clovelly, Padstow or Port Isaac.



If you like walking the moors or visiting moorland villages you'll find Dartmoor, Bodmin Moor and Exmoor an easy drive away.

There are plenty of places to eat out - enjoy a cream tea or meal at a nearby village pub or a gourmet meal at Tony Bricknell-Webb's Percy's restaurant.



The village shop and post office is just 1 mile away, larger shops and pubs, golf course and swimming pool are only 4 miles away.

Close at hand you can find a wide variety of sites to cover all interests from the historic

with the famous Drogo and Tintagel castles



or museums such as the Cobbaton Combat Collection

or Dingles Steam Village

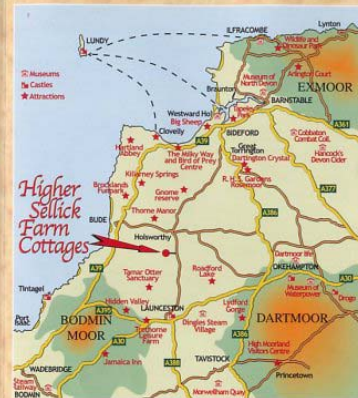


to the more modern attractions like the Eden Project, St Austell.

Whichever you choose you're bound to have a great time in the southwest.



Higher Sellick Farm Cottages are ideally located to visit the wealth of attractions that North Devon and Cornwall have to offer. The sandy beaches and rock pools at Bude and Widemouth Bay and the South West Coastal Path are only a short drive away.



This map illustrates just a few of the attractions that surround Higher Sellick Farm.

What ever your holiday preferences you're bound to find something to suit all ages and interests.

These and more can also be found on our web site at: [www.devonholidays.org](http://www.devonholidays.org)

